

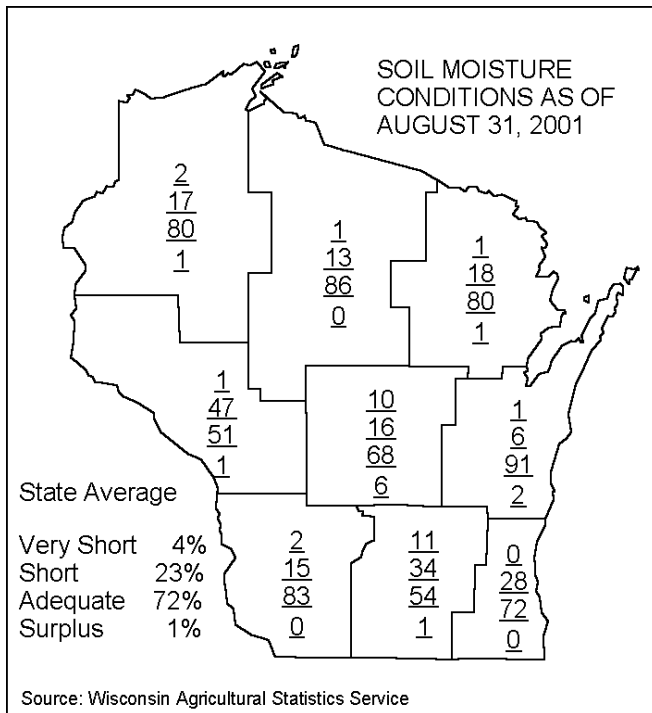


COOPERATIVE PEST SURVEY BULLETIN

State of Wisconsin
Department of Agriculture
Trade & Consumer Protection

Agricultural
Resource
Management

BUREAU OF PLANT INDUSTRY P.O. BOX 8911 MADISON, WI 53708-8911
PHONE: 608-224-4571 FAX: 608-224-4656

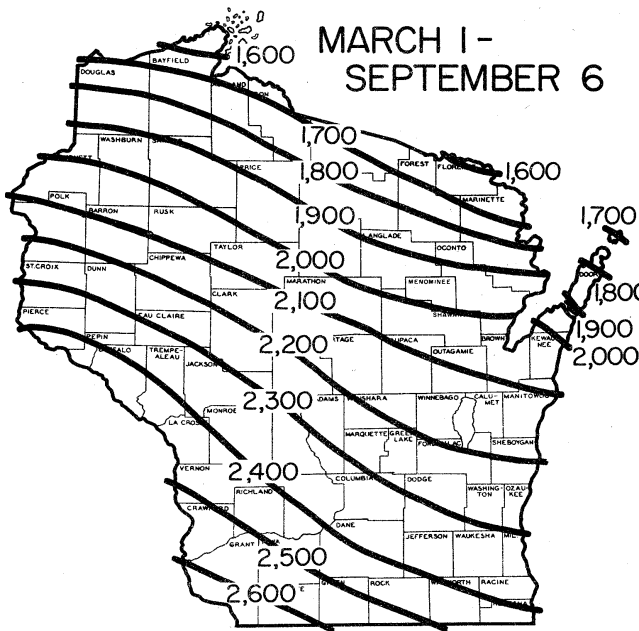


WEATHER AND PESTS

This is the last weekly Pest Survey Bulletin of the year. Thanks to everyone who contributed information. The next Bulletin will be October 4th. In that issue there will be a survey which must be filled out and returned in order to remain on the mailing list.

Growing degree days from March 1 through September 5 were:

Site	GDD* ¹	2000 GDD	Normal GDD	Base ¹ 48	Base ¹ 40
SOUTHWEST					
Dubuque, IA	2528	2542	2626	2478	4033
Lone Rock	2373	2415	2475	2309	3860
SOUTHCENTRAL					
Beloit	2570	2423	2480	2444	4121
Madison	2394	2284	2384	2383	3876
Sullivan	2506	2283	2353	2401	4043
Juneau	2451	2314	2252	2378	3957
SOUTHEAST					
Waukesha	2424	2271	2310	2381	3921
Hartford	2401	2251	2254	2376	3882
Racine	2323	2228	2355	2373	3777
Milwaukee	2279	2142	2328	2301	3718
EAST CENTRAL					
Appleton	2256	2076	2088	2244	3687
Green Bay	2119	1937	2032	2160	3520
CENTRAL					
Big Flats	2279	2137	2234	2198	3703
Hancock	2292	2134	2180	2235	3716
Port Edwards	2168	2039	2250	2176	3552
WEST CENTRAL					
LaCrosse	2448	2573	2407	2269	3924
Eau Claire	2357	2354	2232	2248	3791
NORTHWEST					
Cumberland	2181	2005	2083	2142	3572
Bayfield	1672	1464	1495	1722	2872
NORTH CENTRAL					
Wausau	2002	1904	2080	2023	3328
Medford	2012	1838	1988	2081	3344
NORTHEAST					
Crivitz	2004	1773	1911	2014	3359
Crandon	1922	1686	1793	1913	3199



Historical Average Growing Degree-Days Accumulated Since March 1. (Wisconsin Agricultural Statistics Service)

GDD (Growing Degree-Days) are synonymous with degree-days above modified base 50°F, with no low temperature below 50°F or above 86°F used in calculation. See map for Historical Average Growing Degree Days.

CORN

European Corn Borer – Our annual fall abundance survey is currently underway. Survey work conducted earlier this week shows larval populations are high in the Northwest. In corn near harvest in Dunn and Chippewa Cos., the rate of infestation ranged from 36 to 160 larvae per 100 corn stalks. Dissection of corn plants revealed mostly 4th and 5th instar larvae, while a few 3rd instar larvae were found feeding in corn ears. The survey is expected to reach completion by the end of the month.

Northern Corn Rootworm – Adults are numerous in some Chippewa and Dunn Co. corn fields. Populations ranged from 0.8 to 3.3 beetles per plant.

SOYBEANS

Soybean Aphid – Severity ratings remain low throughout the state. In the southwest a majority of the fields surveyed had fewer than 10 aphids per leaf, although a small number of fields with 11-25 aphids per plant were encountered. Similarly, in the northwest, all fields surveyed had fewer than 10 aphids per plant.

Grasshoppers – High numbers of adults are still present along roadsides and fencerows in Dunn and Chippewa Cos. Heavy defoliation was observed in a number of mature soybean fields, and some damage to corn was noted as well.

GINSENG

Cultivated ginseng export program – With or without an operating **ginseng marketing order**, ginseng sold by growers and dealers for export must be accompanied by a certificate of origin issued by DATCP's ginseng program. This state certification program operates under state statute 94.50. It is a federally mandated program necessary because of the international CITES treaty (Convention on Trade of Endangered Species of Flora and Fauna). Application forms are available on our website <http://datcp.state.wi.us/arm/agriculture/crops/specialty-products/ginseng.html> or call Chris Nelson at (608) 224-4500.

Please request your certificate at least two weeks in advance. Remember to complete the bottom part of your certificate and return it to the ginseng program **within 30 days**. This is how we keep track of ginseng sales statistics. If you have any questions about filling out your certificate please call Chris or Anette Phibbs at (608) 224-4575.

FOREST, SHADE TREE, ORNAMENTALS AND TURF

Bronze birch borer - A heavy infestation was found on whitespire birch at a nursery in Waukesha Co. Several

paper birch were infested at a nursery in Price Co.

Linden borer - Greenspire linden at a nursery in Ozaukee Co. had moderate numbers of trees showing signs of this pest.

Pine needle scale - Moderate amounts of scale were found on white and Scotch pine at a nursery in Ozaukee Co.

Rhizosphaera needle cast - Light to moderate amounts of needle cast were observed on fraser fir at a Christmas tree field in Adams Co.

Asteroma leaf spot - Moderate amounts of leaf spotting by this fungal disease were found on linden trees at nurseries in Ozaukee and Waukesha Cos.

Guignardia leaf blotch - Horsechestnuts at a nursery in Waukesha Co. had moderate amounts damage from this fungus.

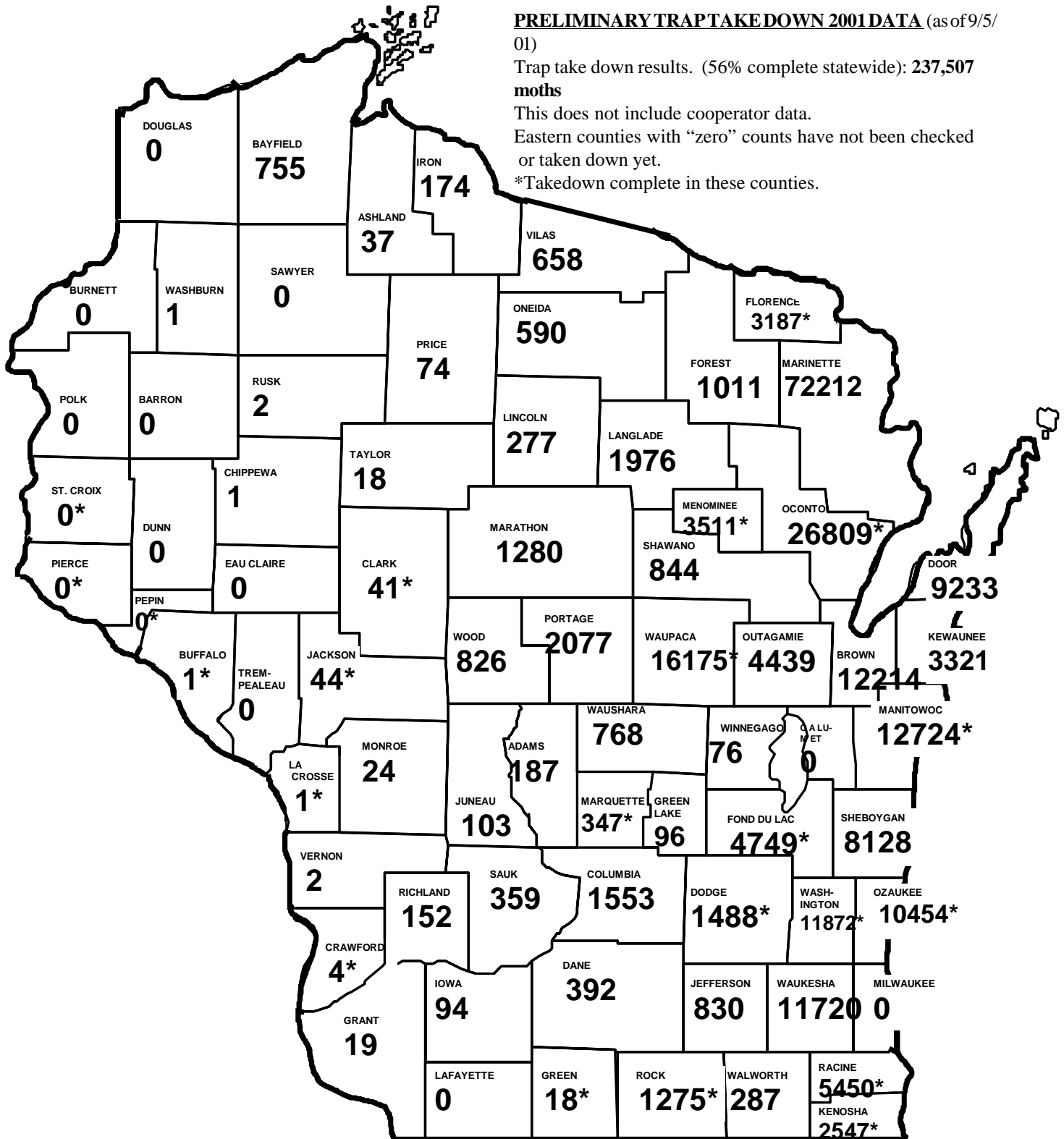
Septoria leaf spot - Various species of dogwoods had moderate amounts of leaf spotting at nurseries in Grant, Iowa, Price and Waukesha Cos.

STATE/FEDERAL PROGRAMS

Gypsy moth program- Trappers are continuing to take down traps. As of 9/5/01, trappers have caught 237,507 male **gypsy moths** with 56% of the trap total taken down. Twenty-two counties are complete and we expect that all traps will be down by the end of September. Counties with the highest totals are: Brown (12,214), Door (9,233), Manitowoc (12,724), Marinette (72,212), Oconto (26,809), Ozaukee (10,454), Sheboygan (8,128), Washington (11,872), Waukesha (11,720), and Waupaca (16,175). See map for other county totals. It should be noted that 12 western counties still have caught no moths: Barron, Burnett, Douglas, Dunn, Eau Claire, Lafayette, Pepin, Pierce, Polk, St. Croix, and Trempealeau. Cooperator totals are not included in the above numbers.

Once all the trap data is in, we will be sending out 3 egg mass survey crews. Each crew consists of 4 egg mass surveyors that will work for 4 weeks searching high count areas looking for evidence of a reproducing **gypsy moth** population. This will take place in mid October to mid-November. The information gathered from trap counts and egg mass surveys will help determine next year's treatment sites.

For more information on the GYPSY MOTH PROGRAM, please call our hotline at 1-800-642-MOTH.



Apple Insect Trapping Results

County	City	Date	STLM	RBLR	CM	OBLR	AM (board)	AM (sphere)
Crawford Co.								
	Gays Mills-	8/20-8/27	0	3	0	0	0	0
		8/25-9/3	0	0	0	5	0	0
Richland Co.								
	Hill Point	8/21-8/28	44	8	0	1	0.5	2.5
		8/29-9/4	10	11	0	2	0	1.5
Iowa Co.								
	Dodgeville*	8/23-8/30	0	9	9	0	4	0
Dane Co.								
	Deerfield	8/21-8/28	25	200	2	0	0	10
		8/30-9/5	25	160	0	2	0	3
Juneau Co.								
	Mauston	8/20-8/26	131	0	0	0	0	
Jackson Co.								
	Hixton	8/21-8/28	40	1	1			
Trempealeau Co.								
	Galesville	8/20-8/27	24	0	7	0	0	0
	Spring Valle	8/16-8/23	113	2	1	0	0	
Fond du Lac Co.								
	Rosendale	8/20-8/27	6	1	0	0	0	3
Marquette Co.								
	Montello*	8/19-8/26	80	52	4	16	0	6
Racine Co.								
	Rochester*	8/23-8/29	164	0	3	1	1	6

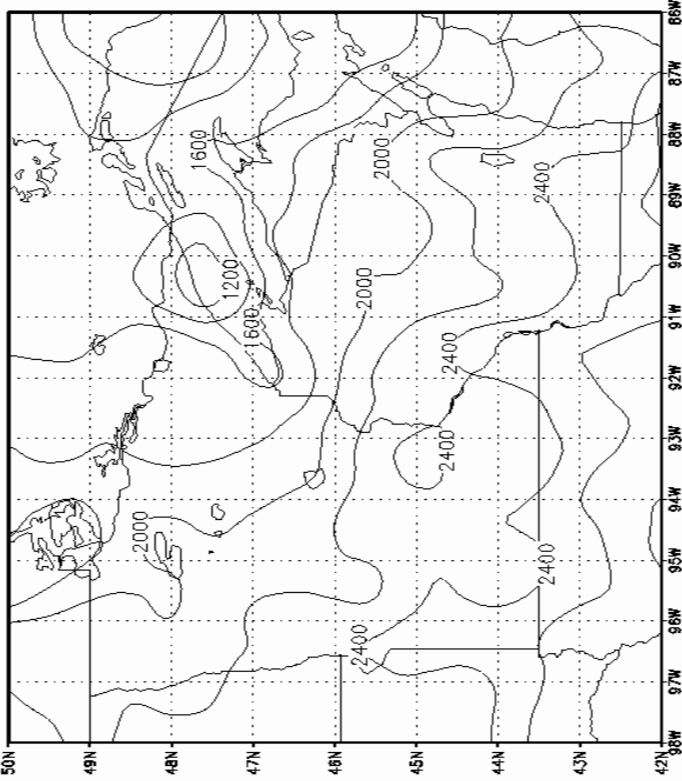
* indicates NEW COOPERATOR!

BLACKLIGHTTRAPPINGRESULTS

For the week ending Sept 5

Site	Euro.	Corn Borer	Army-Worm	Black Cutw.	Vari. Cutw.	Spot. Cutw.	Corn Earw.	Pheromone Corn Earw.
South								
Janesville	148	33	14	0	10	30		
South Central								
Mazomanie	31	20	0	2	6	18		
Reedsburg	75	11						
West Central								
Coon Valley							9	
Northwest								
New Richmond	38	2				1	490	(through 8-30)
Chippewa							114	

Base 50F D.D. from 1 Jan to 5 September 2001



**Department of Agriculture,
Trade & Consumer Protection**

Agricultural Resource Management Division
PO Box 8911
Madison WI 53708-8911

**FIRST CLASS MAIL
US POSTAGE
PAID
Madison WI
Permit No. 110**